

Use natural lawn care products

Toxins in conventional lawn fertilizers have been found to potentially contaminate our water supply as well as cause a range of health problems, especially in children. Organic fertilizers help protect grass during droughts, staying in the soil to provide plants and grasses needed nutrients.

Use a push mower

A gas powered mower emits as much pollution as driving your car 100 miles. Hand powered mowers are best for grass shorter than three inches and lawns smaller than 1000 square feet.



Our groundwater

While Madison's drinking water meets or surpasses state and federal water standards, **the presence of nitrate in our groundwater should give us all pause before using quick-release fertilizers.** According to the Madison Water Utility's annual water quality report, runoff from fertilizer use is one of the likely sources of these nitrates.

Lake weeds

Madison residents have a close-up view of the harmful effects of lawn chemicals: lake weeds choke our beaches, fluster boaters and create an eyesore. Fertilizer runoff is partly to blame for the proliferation of lake weeds and algae.

Homeowners use three to six times more chemicals, per acre, than corn and soybean farmers. One pound of phosphorus in a lake can result in 300-500 pounds of algae.

Natural pest control

Pest	Plant Repellent
Ant	mint, tansy, pennyroyal
Aphids	mint, garlic, chives, coriander, anise
Bean Leaf Beetle	potato, onion, turnip
Cucumber Beetle	radish, tansy
Flea Beetle	garlic, onion, mint
Japanese Beetle	garlic, larkspur, tansy, rue, geranium
Mice	onion
Slugs	prostrate rosemary, wormwood
Spider Mites	onion, garlic, cloves, chives
Stink Bug	radish
Tomato Hornworm	marigolds, sage, borage

Limiting Food's Impact

Earth-friendly food tips

1. Buy Local

On average, our food travels 1500 miles before it reaches our dinner table. By eating locally grown food, vehicle emissions are reduced drastically.

2. Compost kitchen scraps

Composting produce scraps and putting them back into the ground provides the needed nutrients for healthy gardening.

3. Start your own garden – or join a community one!

Local food is healthier, uses less fuel and contains more flavor. Gardening is also great exercise!

3. Buy organic

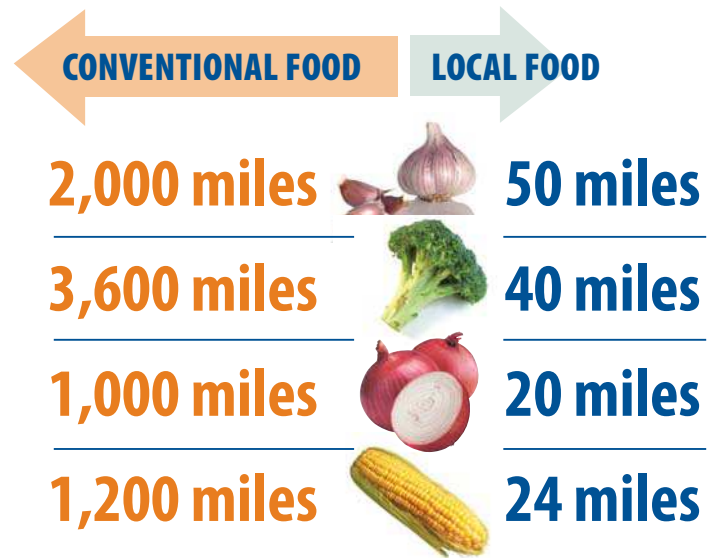
Many fertilizers contain toxic and otherwise harmful chemicals that seep into our waterways and pollute the ground.

Conventionally-grown berries, peppers, cantaloupes and apples are among the foods most-heavily treated with pesticides.

Food transportation

120 million tons of CO2 emissions are directly attributable to domestic food transport each year.

AVERAGE NUMBER OF MILES OUR FOOD TRAVELS



To survive 1,569 miles on the road, conventionally grown tomatoes are picked while hard and green and then gassed with a hormone to help them ripen.

Locally grown tomatoes, traveling an average of 60 miles, get to ripen on the vine!

Take the bus or carpool...

The City of Madison's **rideshare/etc** is an online rideshare matching service which allows commuters to quickly find transportation options for carpooling, vanpools, transit, park and ride lots, and bike

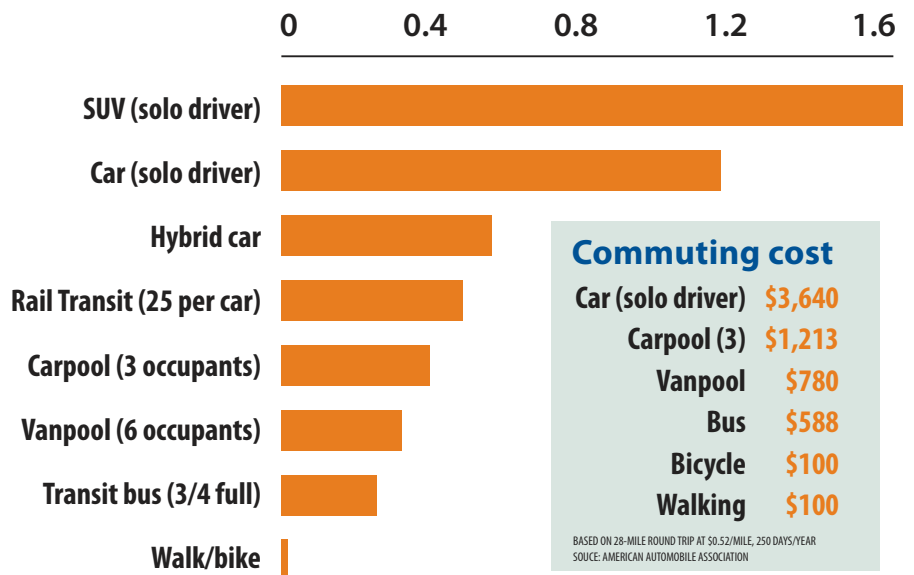
routes. Information provided to you is based on the choices you make when you register. For carpooling or vanpooling, the match report will show individuals with similar commutes and work hours.



Pedal Power

Madison and the surrounding communities have **miles of bike trails** to participate in this low-impact, aerobic activity.

Pounds of CO₂ per mile



Commuting cost

Car (solo driver)	\$3,640
Carpool (3)	\$1,213
Vanpool	\$780
Bus	\$588
Bicycle	\$100
Walking	\$100

BASED ON 28-MILE ROUND TRIP AT \$0.52/MILE, 250 DAYS/YEAR
SOURCE: AMERICAN AUTOMOBILE ASSOCIATION

SOURCE: SIGHTLINE INSTITUTE